



# HPE Aruba + HPE Juniper = **HPE Networking**

9 October, 2025

Hosted by:

Martti Saramies, Sr Partner Manager, Juniper

Jukka Vesa, Systems Engineer, Arrow ECS

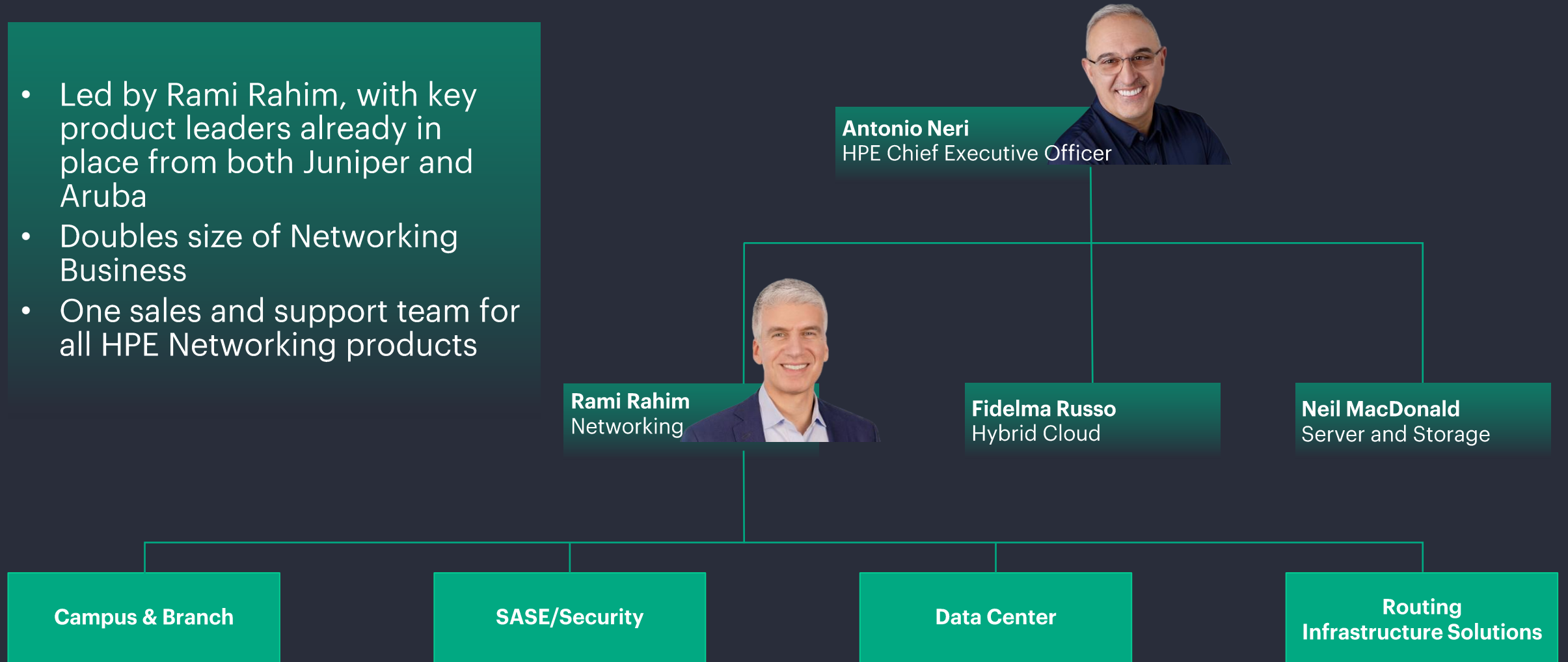
# Agenda

- 
- 01** AI Native Platform – Self Driving Networking Now
  - 02** HP Enterprise and Juniper merger update, Martti Saramies, Juniper Networks
  - 03** Drive exceptional user experiences with self-driving networks, Jukka Vesa, Systems Engineer, Arrow ECS
- 




# HPE Networking: One Team

- Led by Rami Rahim, with key product leaders already in place from both Juniper and Aruba
- Doubles size of Networking Business
- One sales and support team for all HPE Networking products



# Self-driving on Aruba *and* Mist

Innovation will accelerate on **both** platforms



“The combination of HPE and Juniper Networks will radically change the networking industry—not by eliminating products from either portfolio—but by creating greater choice”

ANTONIO NERI

“... let me be clear: our goal in embarking on this acquisition is not to eliminate products, but to offer enhanced choice and more innovation for all customers.”

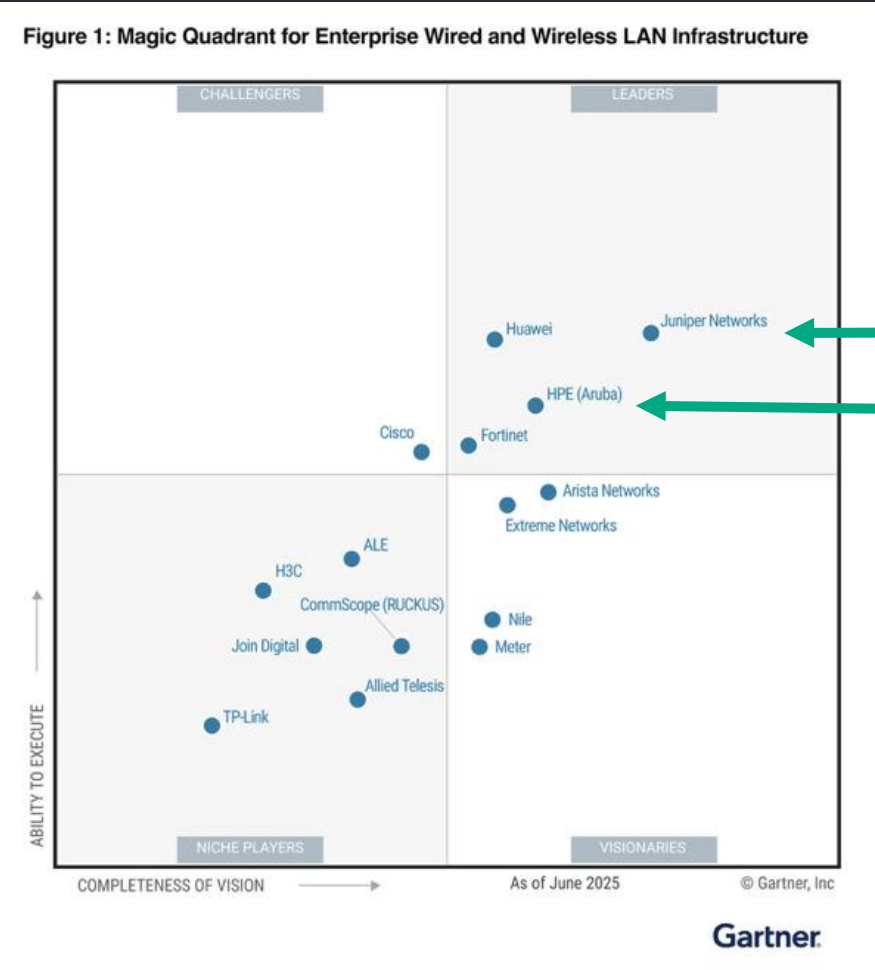
RAMI RAHIM

# HPE Networking BU Primary Solutions

Campus & Branch	SASE & Security	Data Center Networking	Wide Area Networking
C&B Switching	SSE / Zero Trust	Automated Data Center	Core Routing
Enterprise WLAN	SD-WAN	AI Data Center	Edge Routing
Private 5G	Firewall		Metro Routing
Network Access Control			Enterprise Routing
SMB			Data Center Interconnect
Full Stack			



# The Two Leading Wired/Wireless Solutions Under One Roof

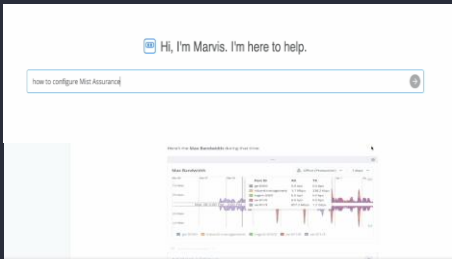


Juniper Networks (Mist)

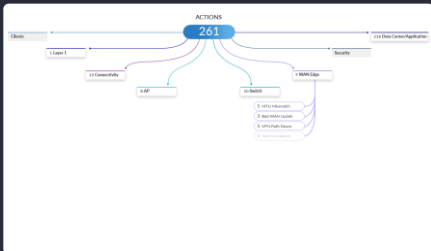
HPE (Aruba)

Gartner, Magic Quadrant for Enterprise Wired and Wireless LAN Infrastructure, Mike Leibovitz, Christian Canales, Nauman Raja, Tim Zimmerman, 25 June 2025.  
Gartner does not endorse any vendor, product or service depicted in its research publications, and does not advise technology users to select only those vendors with the highest ratings or other designation. Gartner research publications consist of the opinions of Gartner's research organization and should not be construed as statements of fact. Gartner disclaims all warranties, expressed or implied, with respect to this research, including any warranties of merchantability or fitness for a particular purpose.  
GARTNER is a registered trademark and service mark of Gartner, Inc. and/or its affiliates in the U.S. and internationally, and MAGIC QUADRANT is a registered trademark of Gartner, Inc. and/or its affiliates and are used herein with permission. All rights reserved.  
This graphic was published by Gartner, Inc. as part of a larger research document and should be evaluated in the context of the entire document. The Gartner document is available upon request from Juniper Networks.

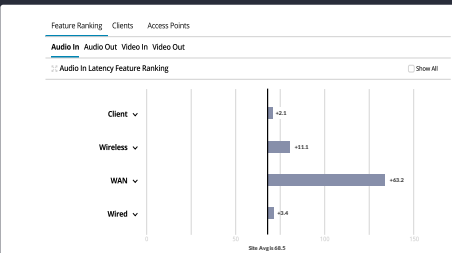
# Aruba and Mist are Leading the Self-driving Journey



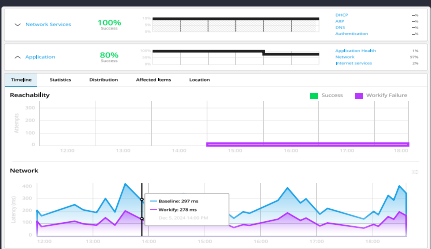
Conversational assistant



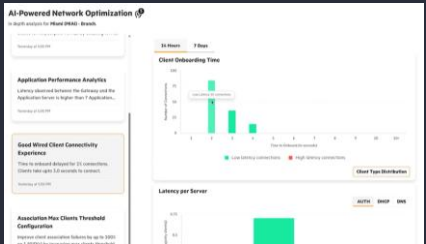
Proactive actions



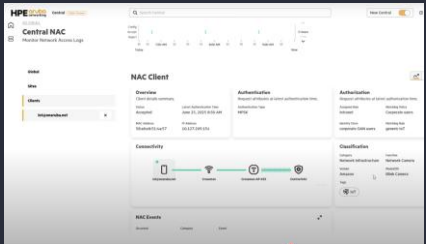
Large experience model (LEM)



Digital experience twins



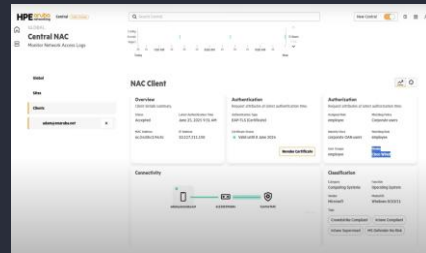
AI insights and client profiling



Access and policy control

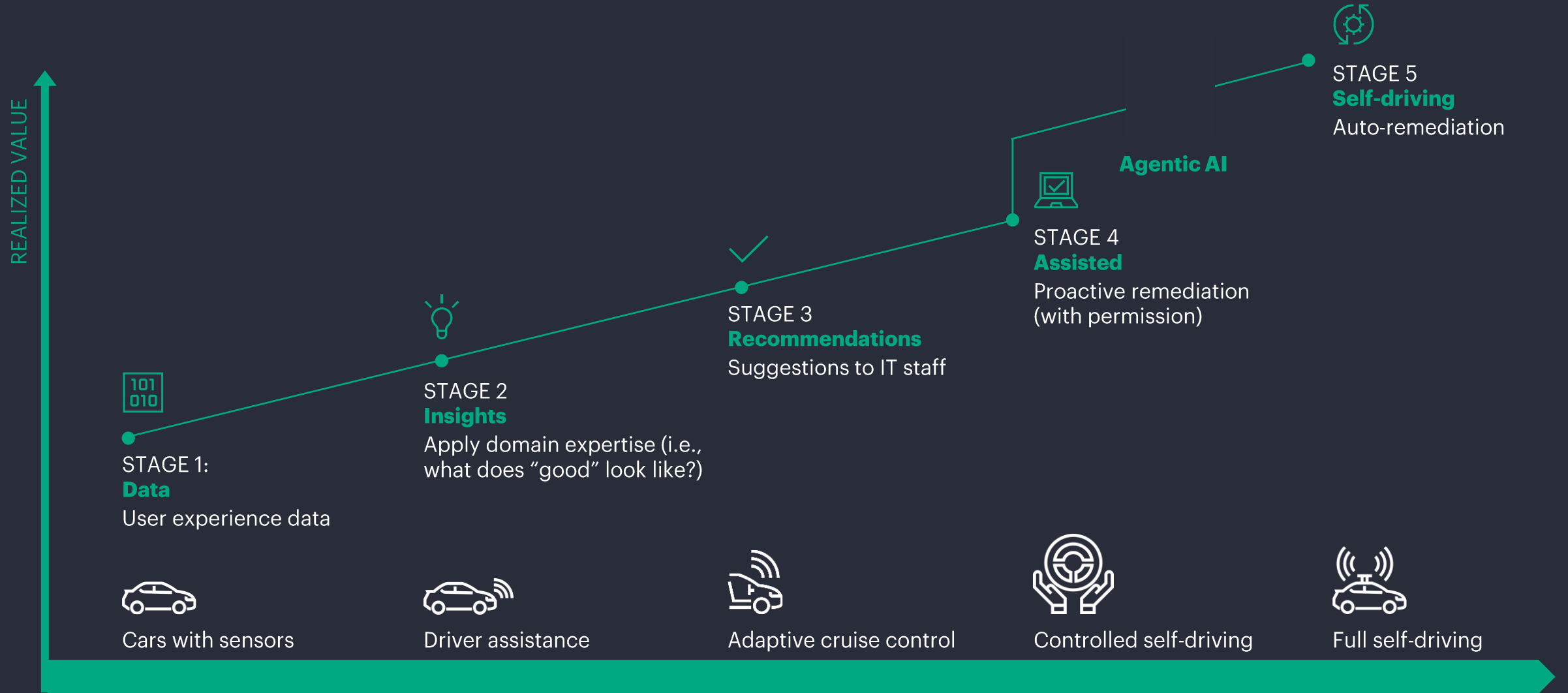


3rd party observability



Cloud | on prem | VPC

# Together We Will Shape the Future of Networking





# Network Transformation at Scale

The world's leading companies depend on HPE Aruba and Juniper Mist



U.S. Department  
of Veterans Affairs



**One vision:**

Drive exceptional user  
experiences with self-  
driving networks





# N2 – Marketing agency



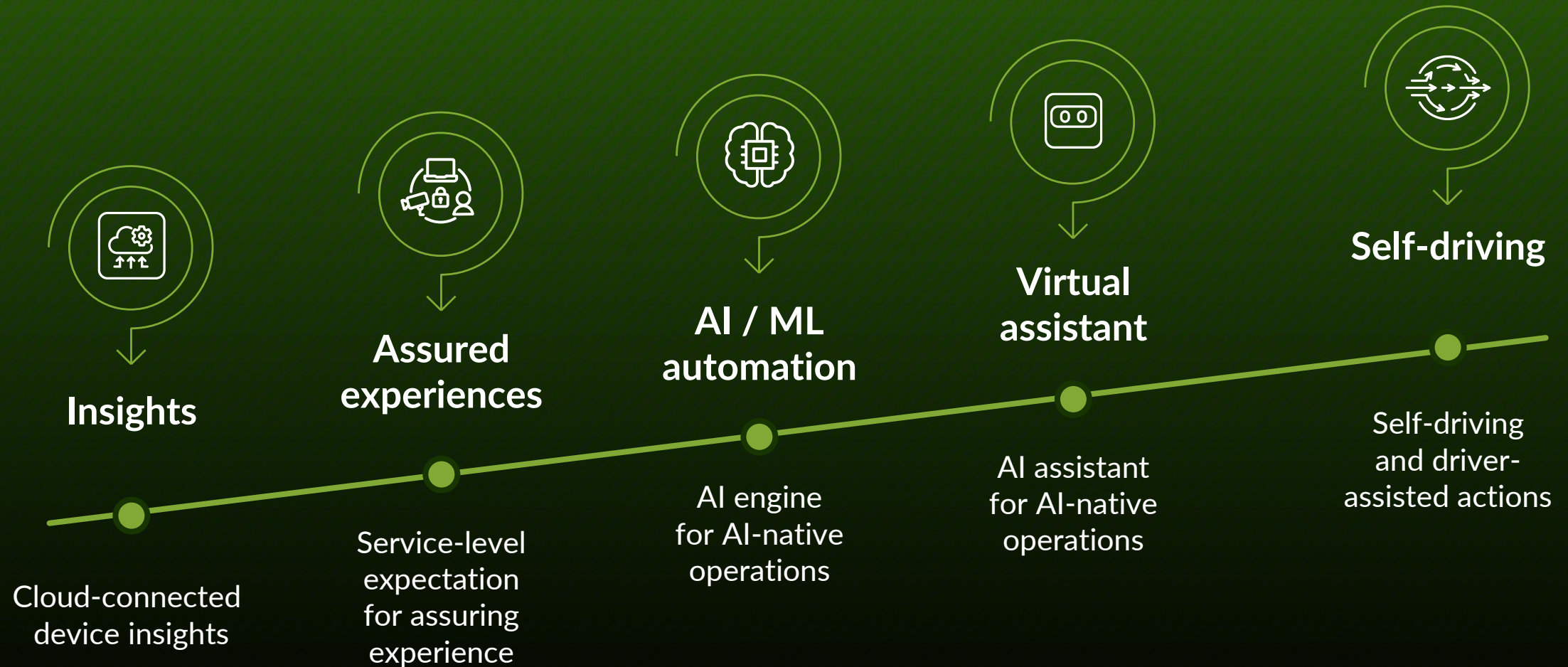
- Finland's N2 marketing agency puts poor Wi-Fi experiences in the past with AI-driven wireless
- **Alex Nieminen, CEO**
- *"It sounds weird to talk about the importance of Wi-Fi," says Alex Nieminen, CEO of N2, an innovative digital marketing agency serving local and global brands. "Wi-Fi is like water. You don't notice it unless it's missing. But here we are."*
- *"The trial of Juniper Mist was a game changer," says Nieminen. "After one day, we were convinced."*
- *"Yhdessä päivässä laitettiin Mist koeverkko pystyyn ja olihan siinä heti ongelma. Mist tukiasema ilmoitti että yhdessä ethernet-piuhassa johon tukiasema oli kytketty, on jotain vikaa.."*
- *"It's hard to put a price sticker on working Wi-Fi, but the number of hours spent on IT support went from a lot to zero," says Nieminen. "I would be surprised if managing the Wi-Fi takes more than an hour a month."*

• <https://www.juniper.net/us/en/customers/n2-case-study.html>

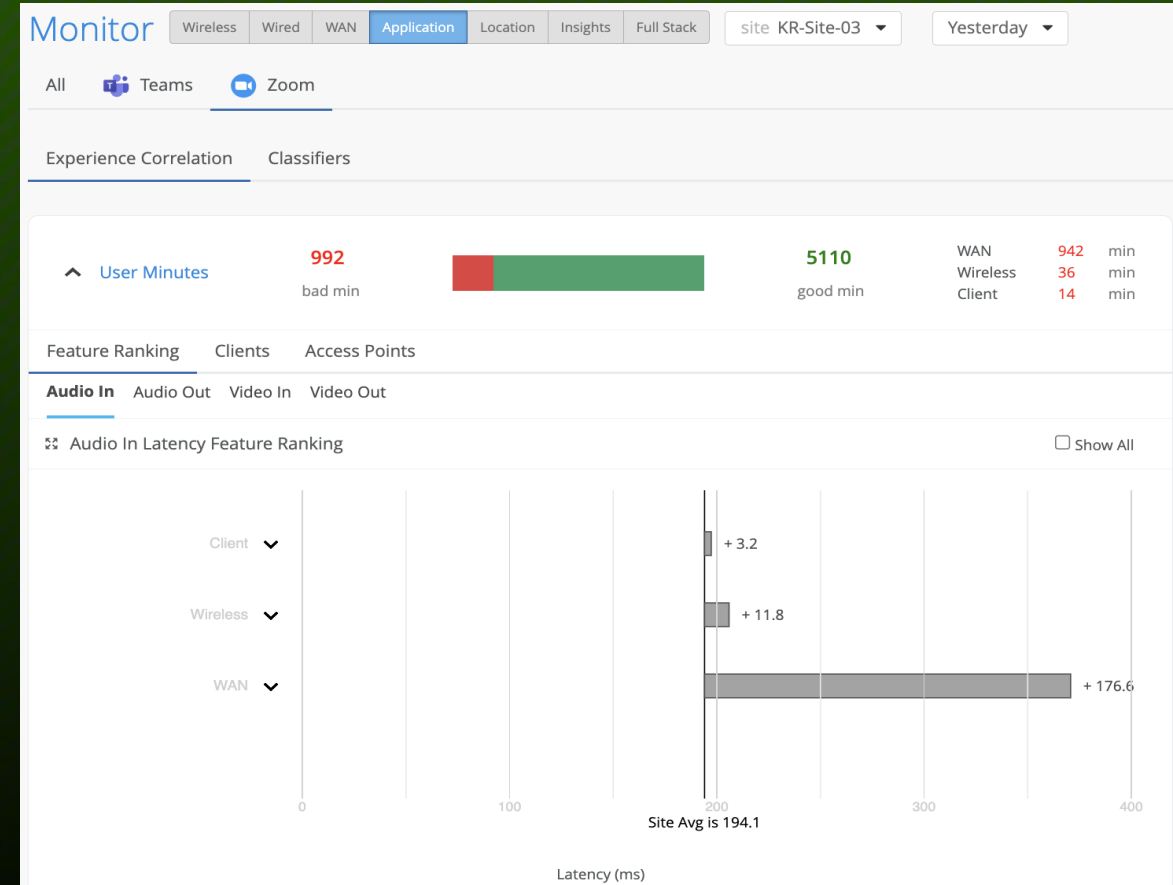
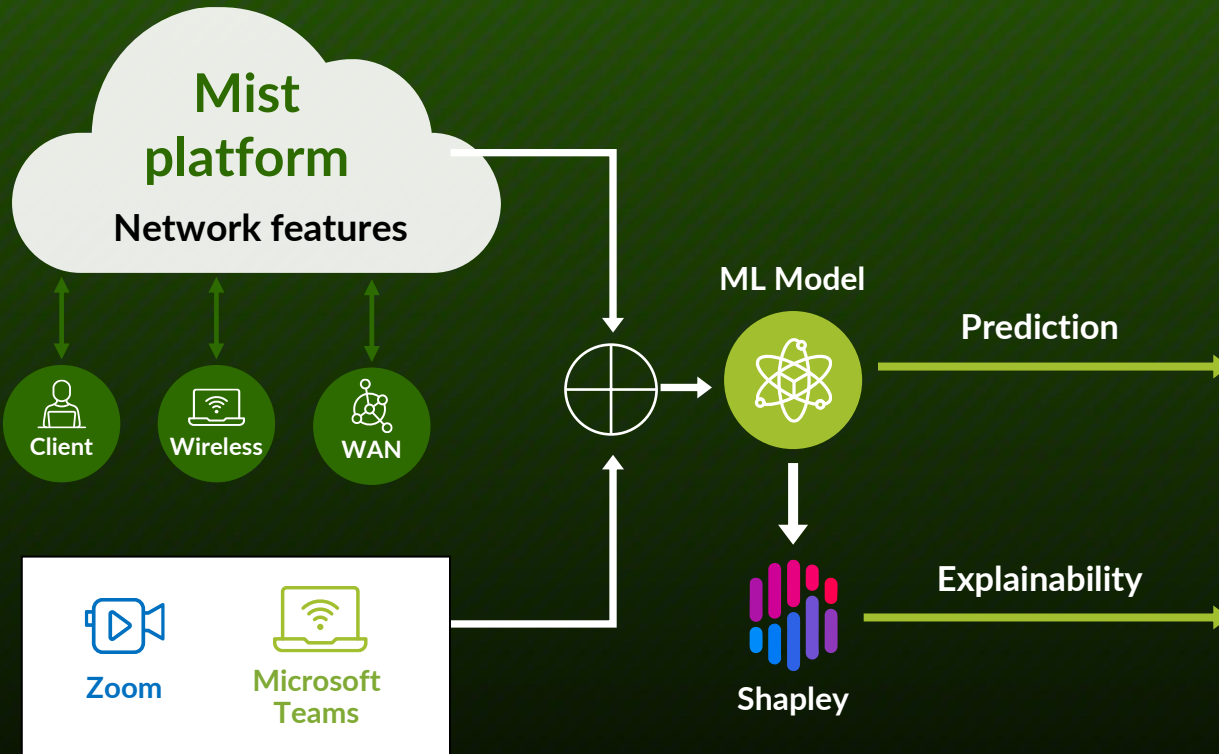
• <https://www.youtube.com/watch?v=K0lecaA8ZQ>



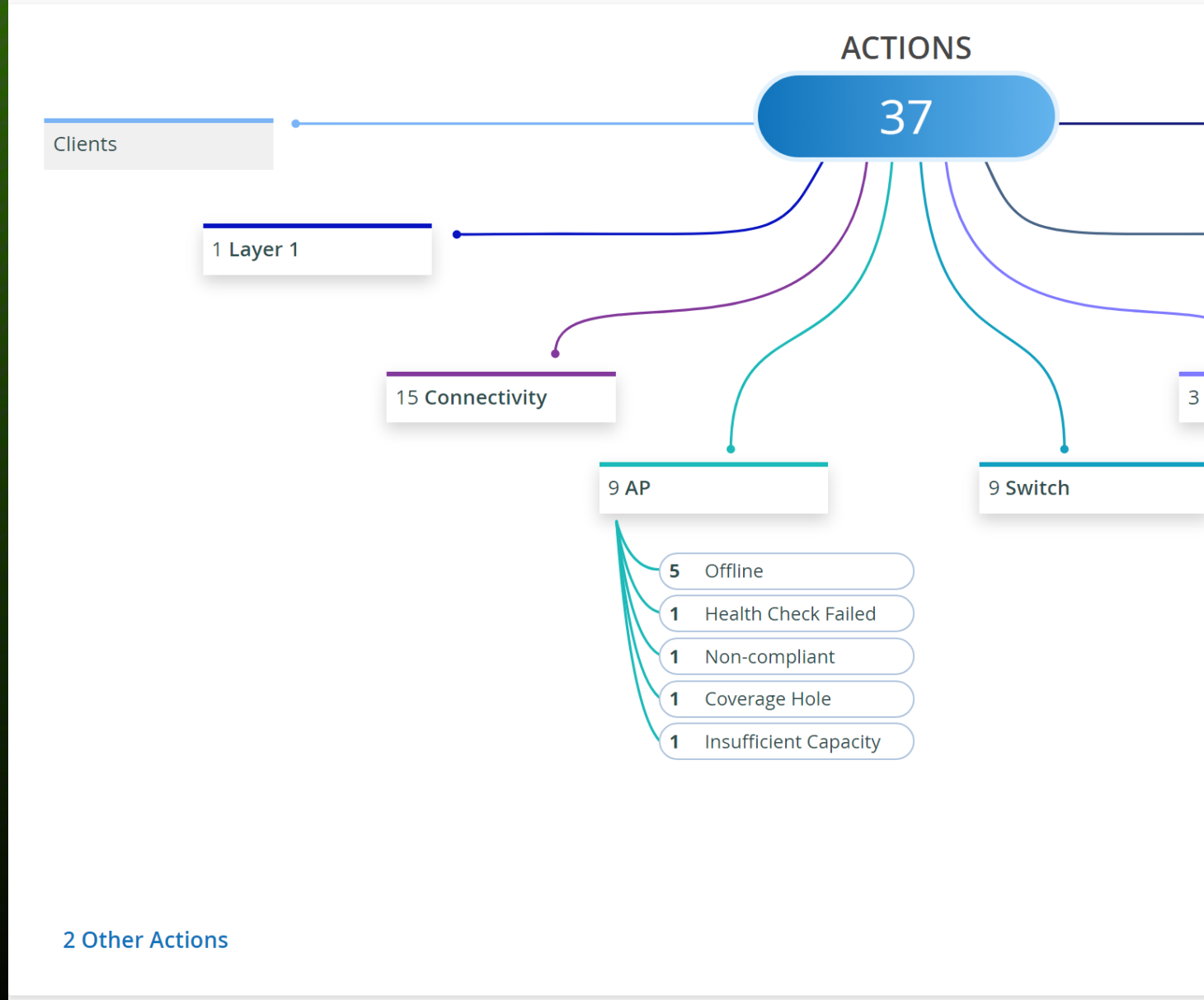
# Journey to Self-driving



# Predict Application Experiences With Continuous User Experience Learning







**MARVIS**

sdey@juniper.net on May 30th 12:00 AM to Jun 6th 8:19 AM. Please select one

- 11:00 AM to 2:00 PM, Jun 5th**  
Usage: 2.1 GB
- 8:00 AM to 11:00 AM, Jun 5th**  
Usage: 1.3 GB
- 12:00 PM to 2:00 PM, Jun 2nd**  
Usage: 1.4 GB
- 9:00 AM to 12:00 PM, Jun 2nd**  
Usage: 171.9 MB
- 6:00 PM to 7:00 PM, Jun 1st**  
Usage: 362.3 kB

👍 🗨

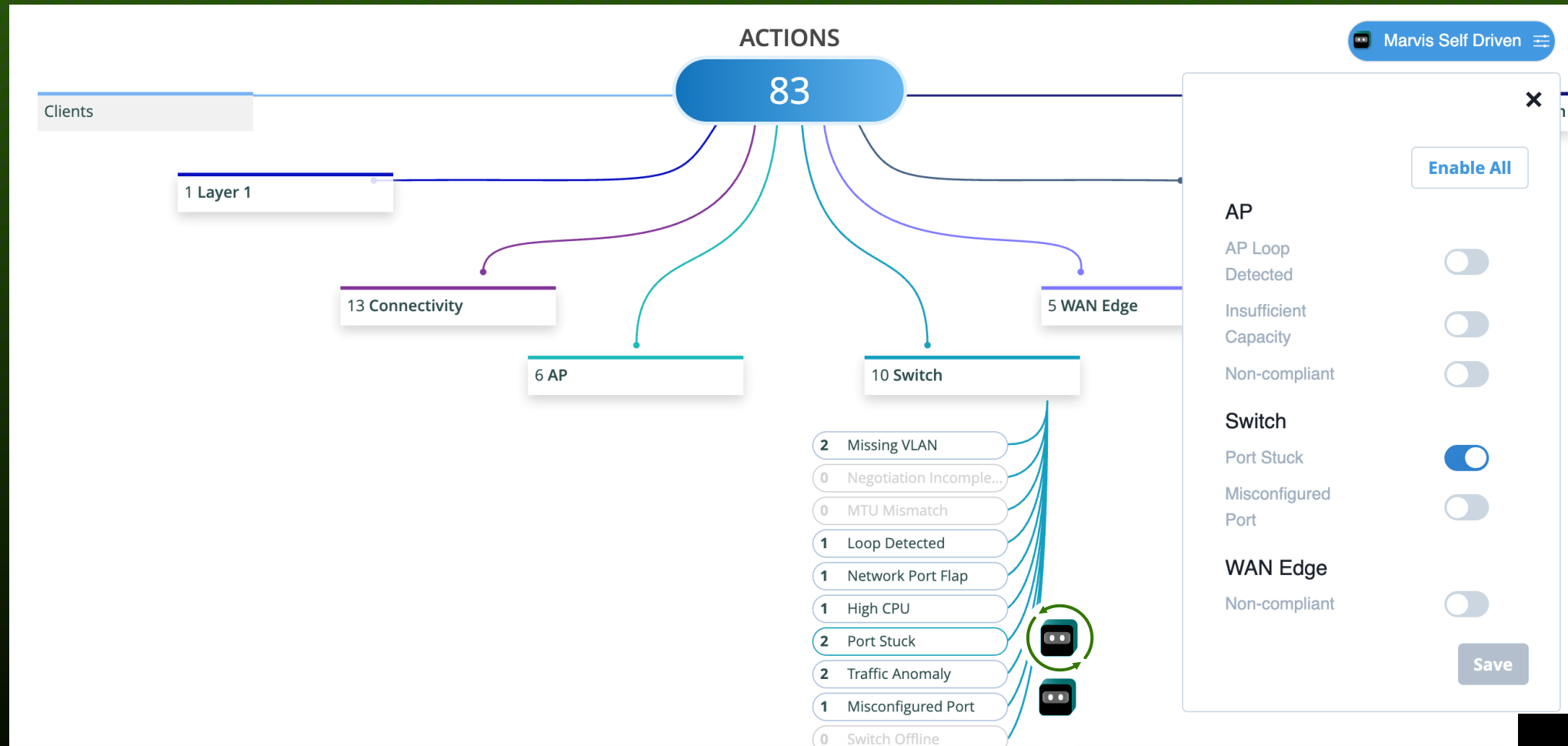
Troubleshoot application MS-TEAMS for sdey@juniper.net on Jun 5th between 11:00 AM to 2:00 PM.

**BETA**

👍 🗨

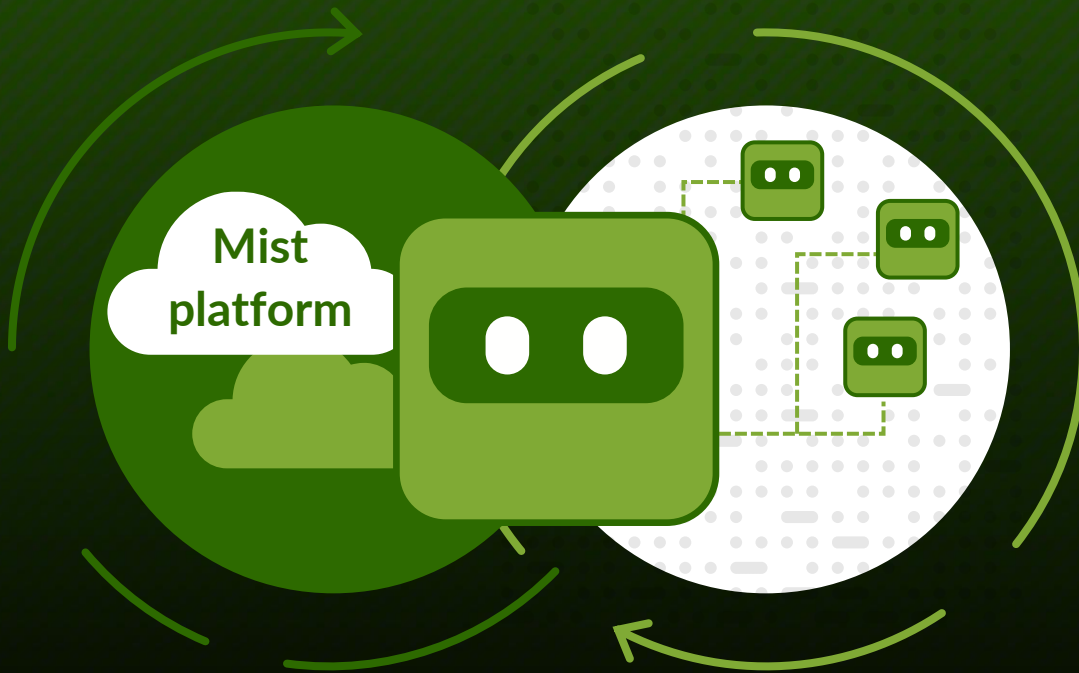
+ Message

# Self-Driving network operations are real today



# Marvis Minis: The only AI-native Digital Experience Twin

How is it unique?



- Constant learning — eliminates manual config
- Always on, or on-demand
- No additional hardware or software
- Dynamic PCAP accelerates resolution
- Configs validated in seconds, not days
- Identify scope of failure



# Self-Driving automation is already changing our lives



**Autonomous vehicles have  
85% fewer crashes**



**Autopilot is required for landing  
in low visibility**



**Thank You!**