

Your Lenovo Guide for 2025

Adas Liubancas



Official Technology Partner

2025 Lenovo Internal. All rights reserved.





AMAZING NEW TECHNOLOGY

What technology wins we are bringing this year?



SUSTAINABLE DESIGN

Why we are the best selection if you keep sustainability in mind?



EASY TO MANAGE

Manage Your Lenovo devices easily & remotely

ThinkPads for business

ThinkPad E

ThinkPad L

ThinkPad T

ThinkPad T14s

ThinkPad X13

ThinkPad X9

ThinkPad X1

1



Accessible
performance
for any
business

2



Productivity
for any
business

3



The corporate
workhorse

4



The corporate
gold standard

5



For those on
the go

6



Next
Generation
ThinkPad

7



The Perfect
Business
Notebook

Key technology & sustainability wins this year

ThinkPad



2025 Lenovo Internal. All rights reserved.

Technology WIN

400 NIT DBEF5 panel technology



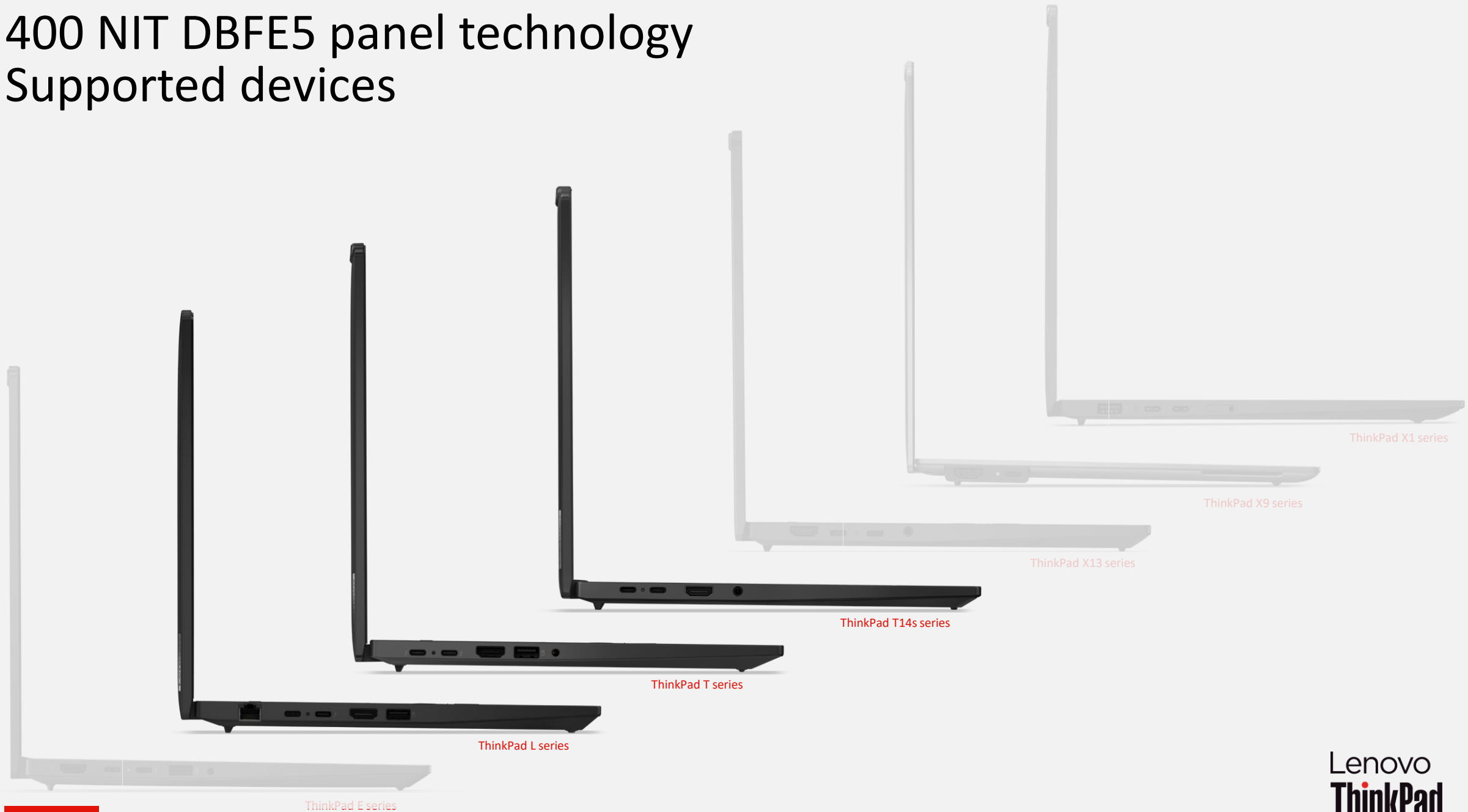
ThinkPads will use DBEF5 film technology that results in:

- 16% lower power consumption
- 20% longer battery life
- 33% increased brightness

Best screen solution for a customer

400 NIT DBFE5 panel technology

Supported devices



Soooo GOOD

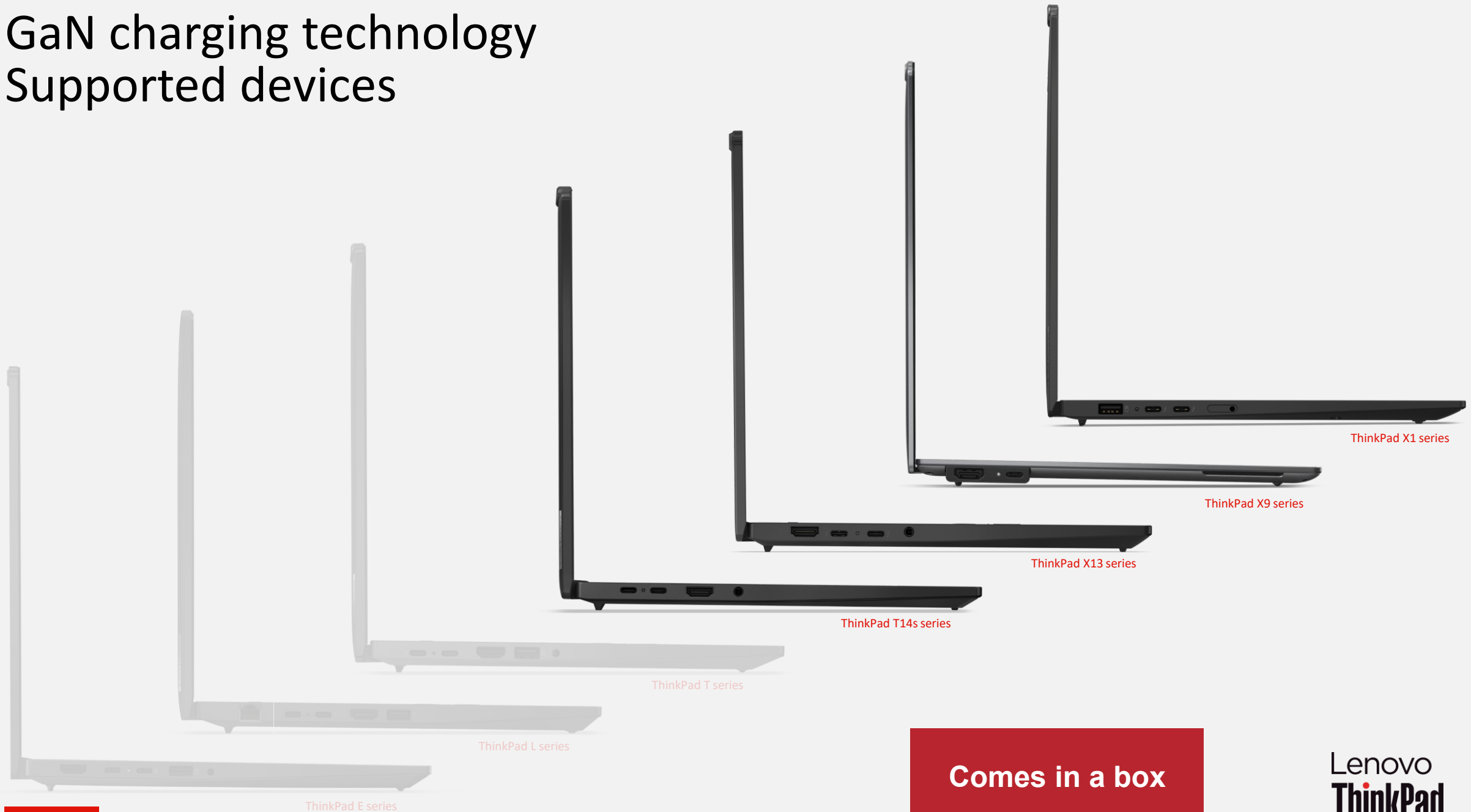
GaN charging technology



Feature	Silicon (Older) Chargers	GaN (Newer) Chargers
Material Used	Silicon	Gallium Nitride (GaN)
Heat Generation	More	Less
Size	Larger (due to spacing between components)	Smaller (components closer together)
Efficiency	Lower	Higher
Future Potential	Limited (already reached limits)	Greater potential for improvement

GaN charging technology

Supported devices



Technology WIN

AI NOW



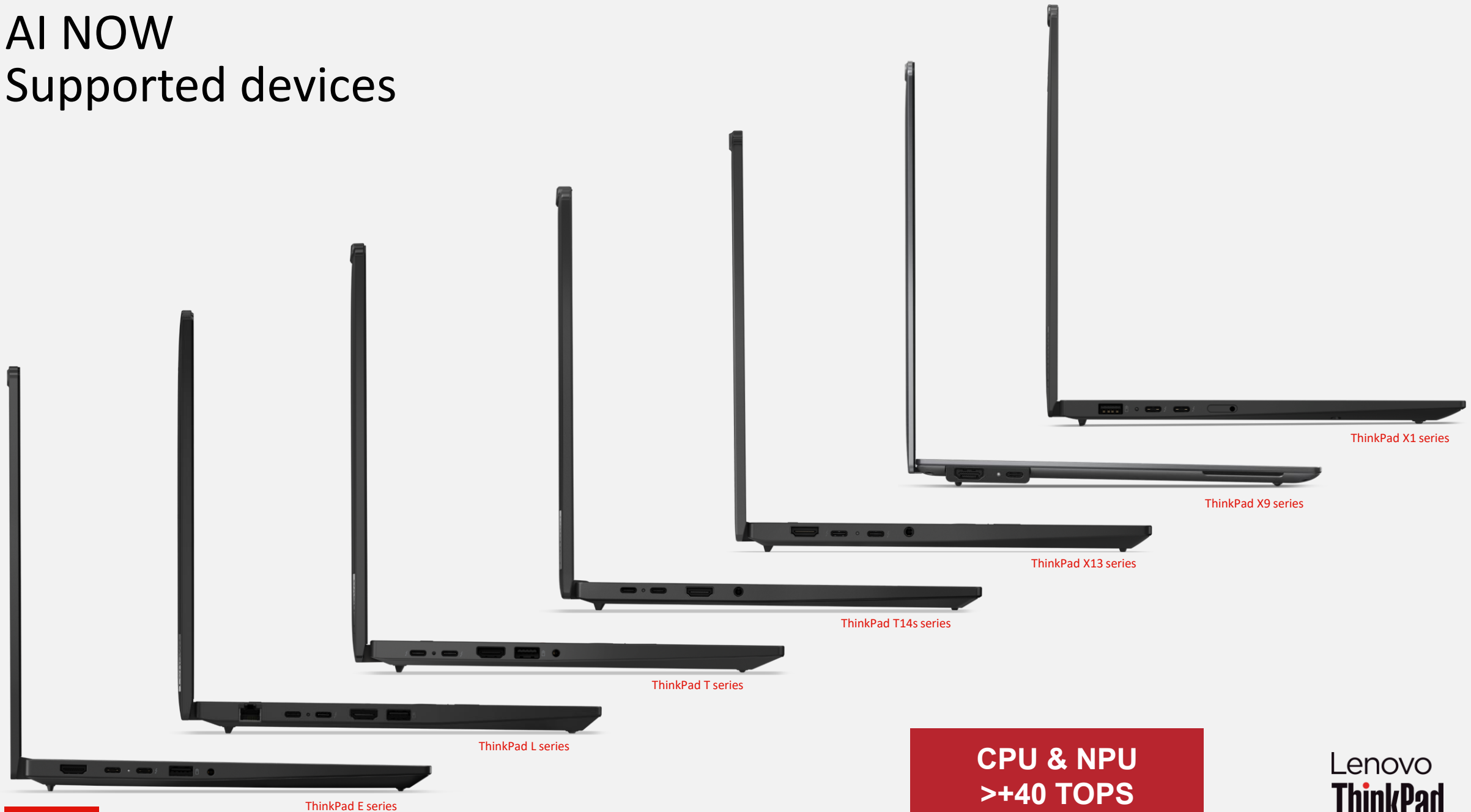
Lenovo AI Now, the personalized intelligent assistant powered by **local Large Language Model (LLM)** and **personal knowledge base**, can bring advanced AI experience, with **high-level security**

Your data stays **SAFE**



AI NOW

Supported devices



ThinkPad X1 series

ThinkPad X9 series

ThinkPad X13 series

ThinkPad T14s series

ThinkPad T series

ThinkPad L series

ThinkPad E series

**CPU & NPU
>+40 TOPS**

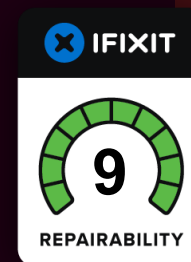


2025 Lenovo Confidential



Technology & Sustainability WIN

Leadership in upgradability and repairability

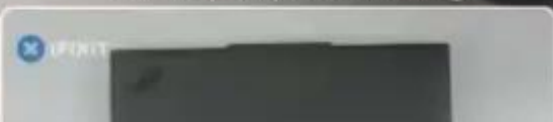


**ThinkPad E
ThinkPad L
ThinkPad T**
series has been
ranked as having
industry leading
repairability
design in 2025

9/10 at latest iFixit
assessment

Lenovo

⌵ Pull up for precise seeking

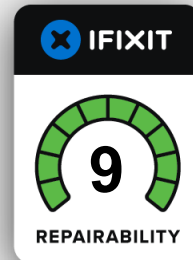


Highest iFixit score with ability to upgrade or repair for yourself



Lenovo

2025 Lenovo Confidential



Lenovo
ThinkPad



Technology WIN

Insane thermals: Flex Cooling

The **most advanced** thermal solution ever in ThinkPad

Dual Fan Flex Cooling gives you more Watts for your Heavy-Duty tasks

Perform like no other workstation does

ThinkPad mobile workstations 2025

TDP (Thermal Design Power) performance

ThinkPad
P14s / P16s
AMD

ThinkPad
P14s / P16s
Intel

ThinkPad
P16v

ThinkPad
P1

ThinkPad
T1g

ThinkPad
P16

ThinkPad
T16g

1

2

3

4

5

6

7



Entry Price
Point

29W



Entry dGPU
Mobility

70W



Mainstream
Performance

90W



Premium
Mobility (RTX
PRO 2000
Blackwell)

95W



Premium
Mobility with
NVIDIA RTX
5070

95W



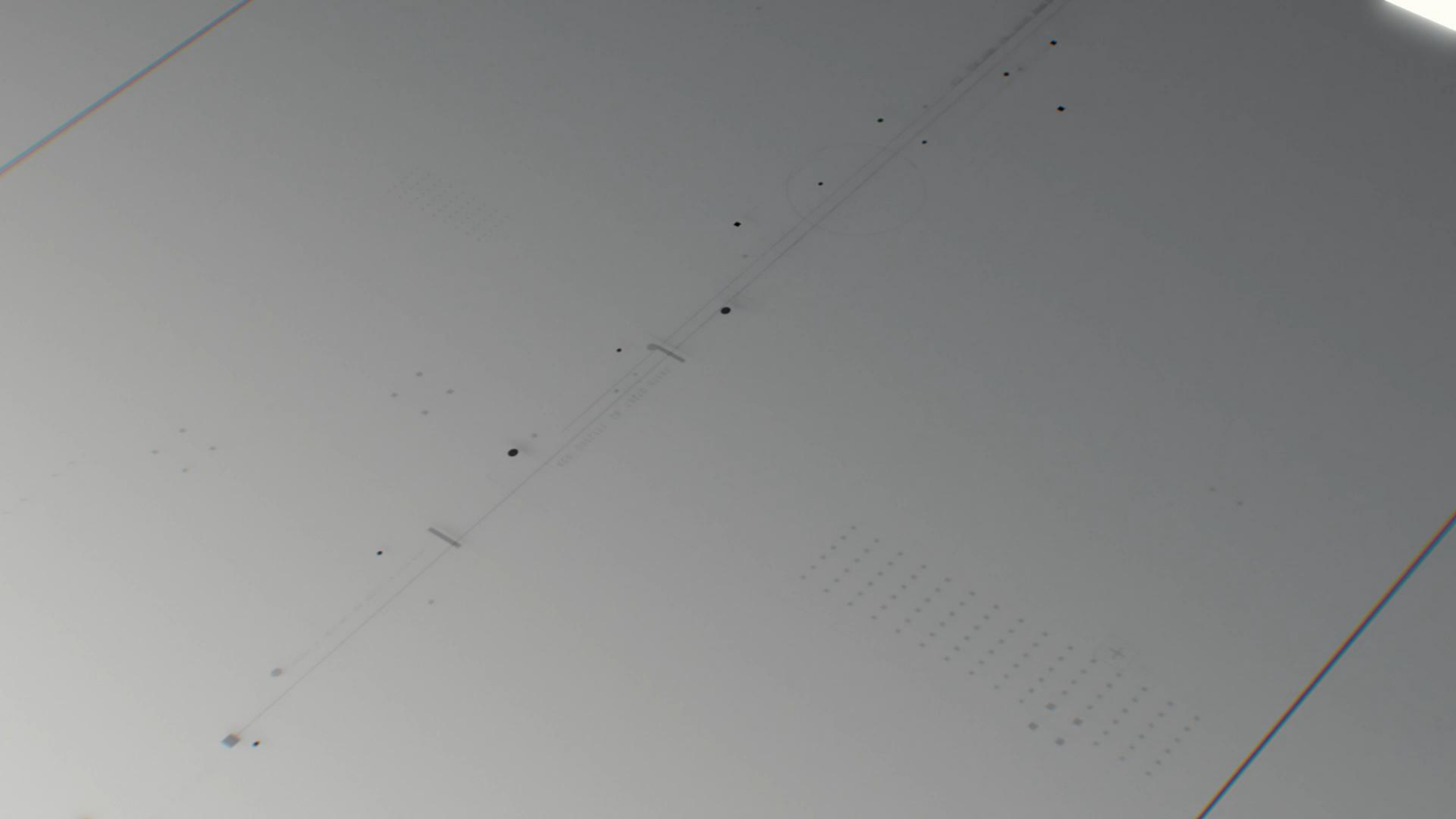
Max
Performance
(RTX PRO
5000 Blackwell)

135W



Max
Performance
with NVIDIA
RTX 5090

135W



Flex Cooling technology with Dual Fans



Technology WIN

Linux for Mobile Workstations

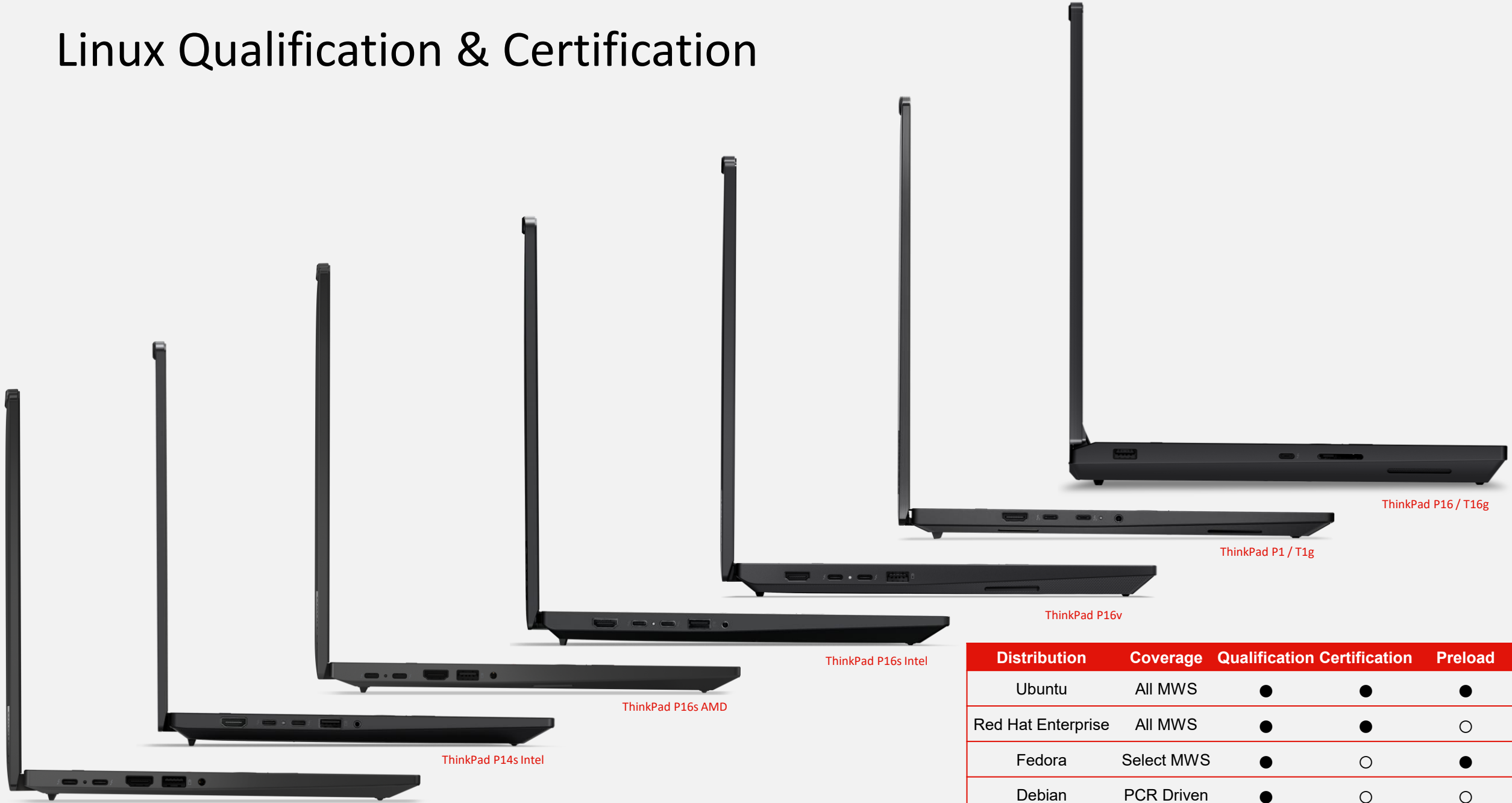


40% of professional developers use a **Linux-based operating system**

Lenovo is **committed to Linux**. Every Mobile Workstation is **qualified and certified** on both Ubuntu and Red Hat Enterprise.

Workstations ready for your **Linux** setups

Linux Qualification & Certification



Distribution	Coverage	Qualification	Certification	Preload
Ubuntu	All MWS	●	●	●
Red Hat Enterprise	All MWS	●	●	○
Fedora	Select MWS	●	○	●
Debian	PCR Driven	●	○	○
Rocky	PCR Driven	●	○	○

Technology & Sustainability WIN

User replaceable battery



**Any user can now
replace a battery at
latest generation
ThinkPad**

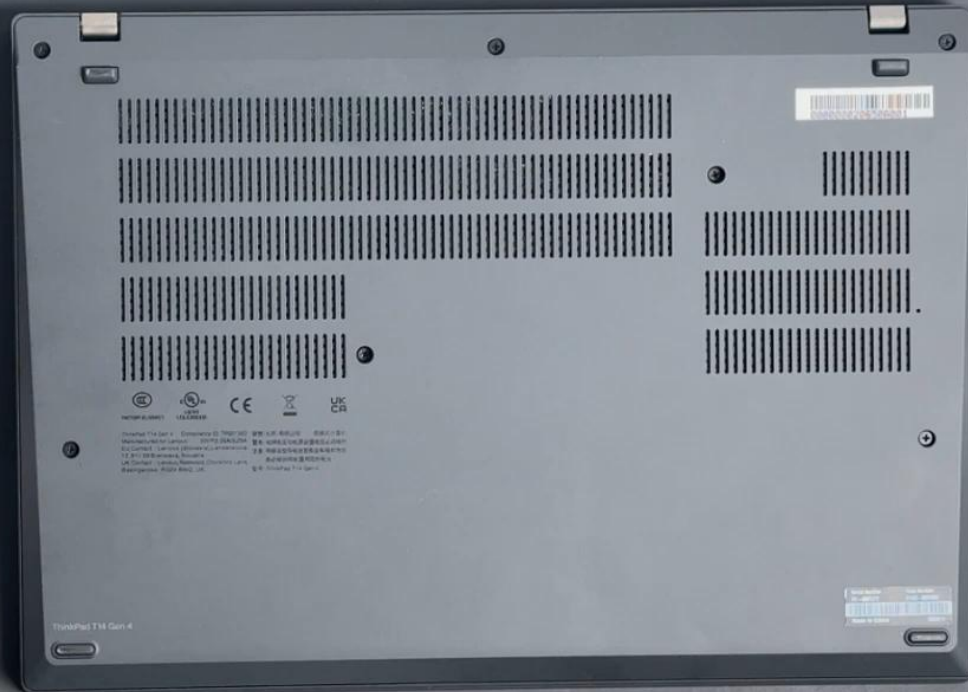
**No knowledge
needed, easy
operation, just have
a screwdriver and
you are good to go**

**Upgrade your
ThinkPad yourself**

Improved repairability – CRU Battery

T14 Gen4

00:00:00

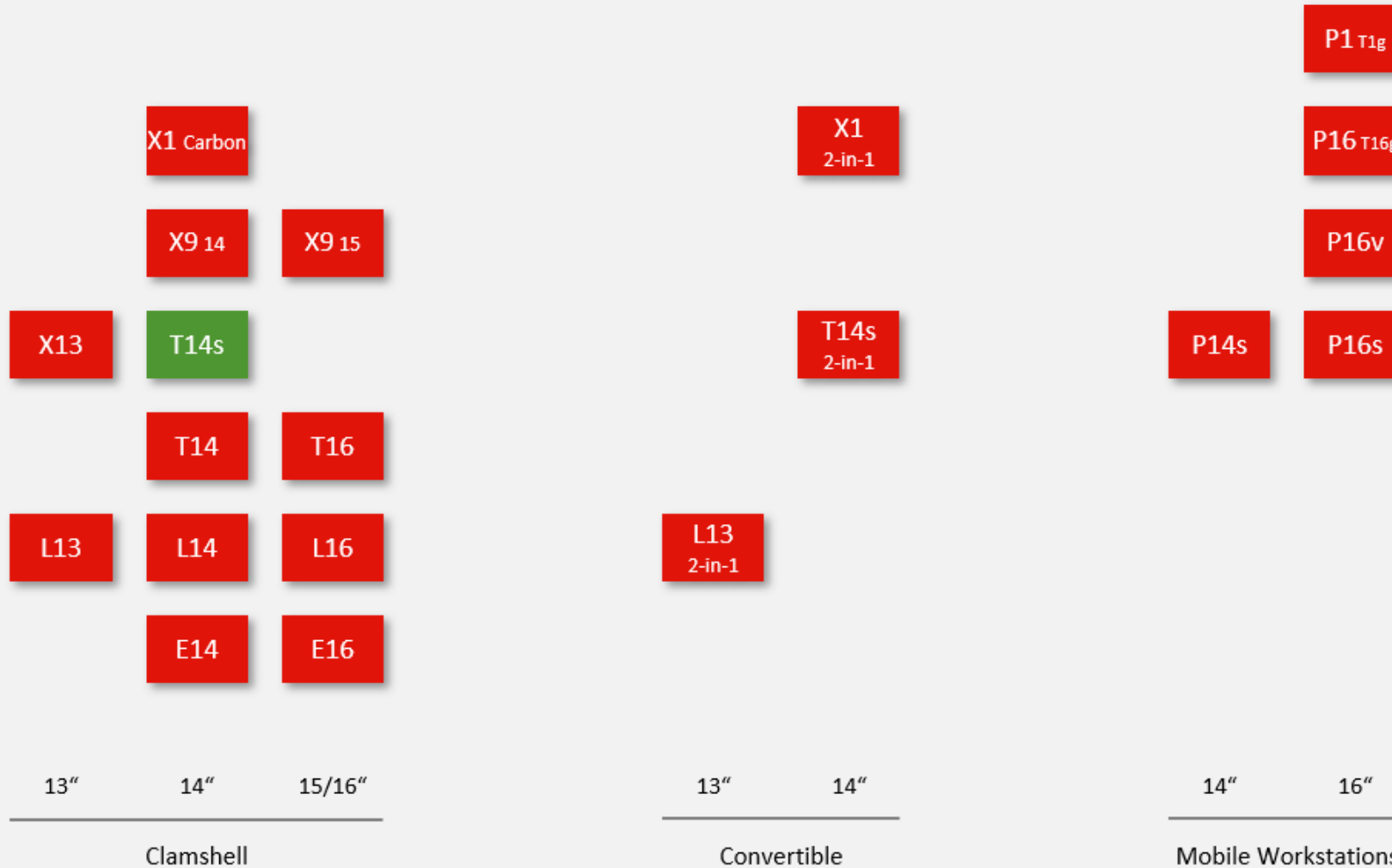


T14 Gen6

00:00:00



User replaceable battery – all ThinkPads



***except T14s
Intel**

Management: easy & remote

ThinkPad & ThinkVision



Official Technology Partner



2025 Lenovo Internal. All rights reserved.

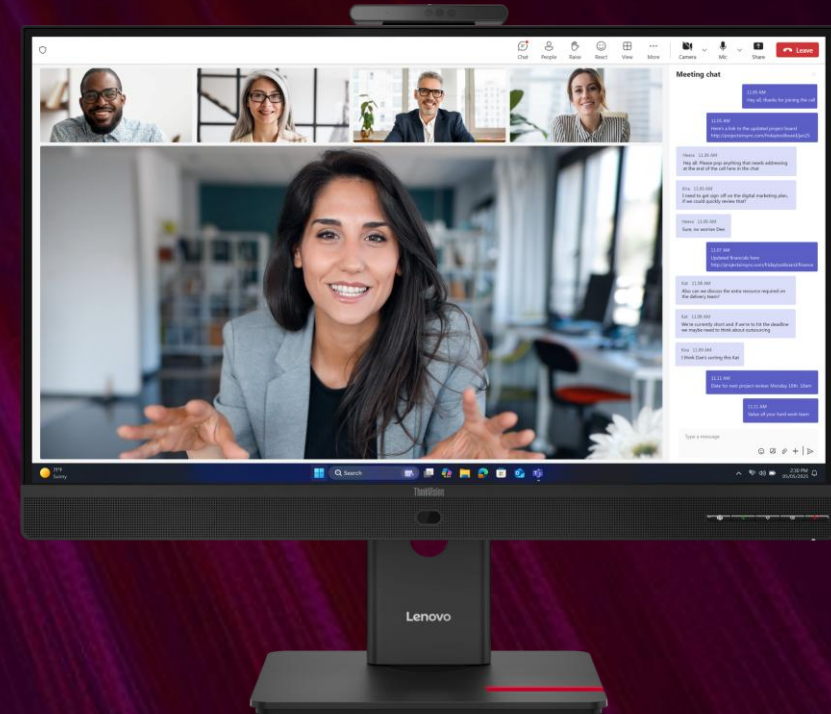
Manage Your Full IT Fleet

Manage Your End-Points



Lenovo Device Orchestration (LDO)

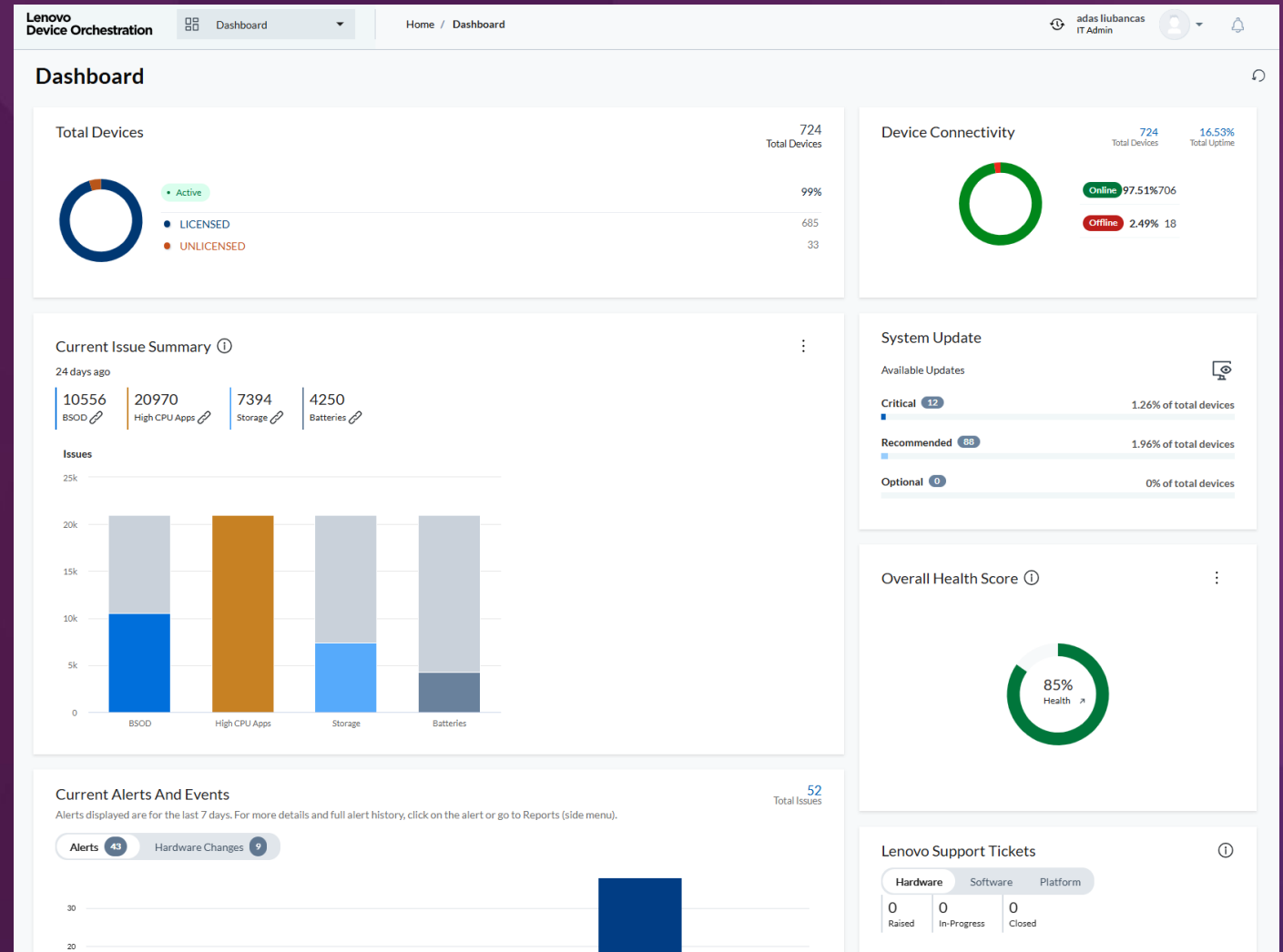
Manager Your ThinkVision monitors



Lenovo Device Fleet Manager (LDFM)

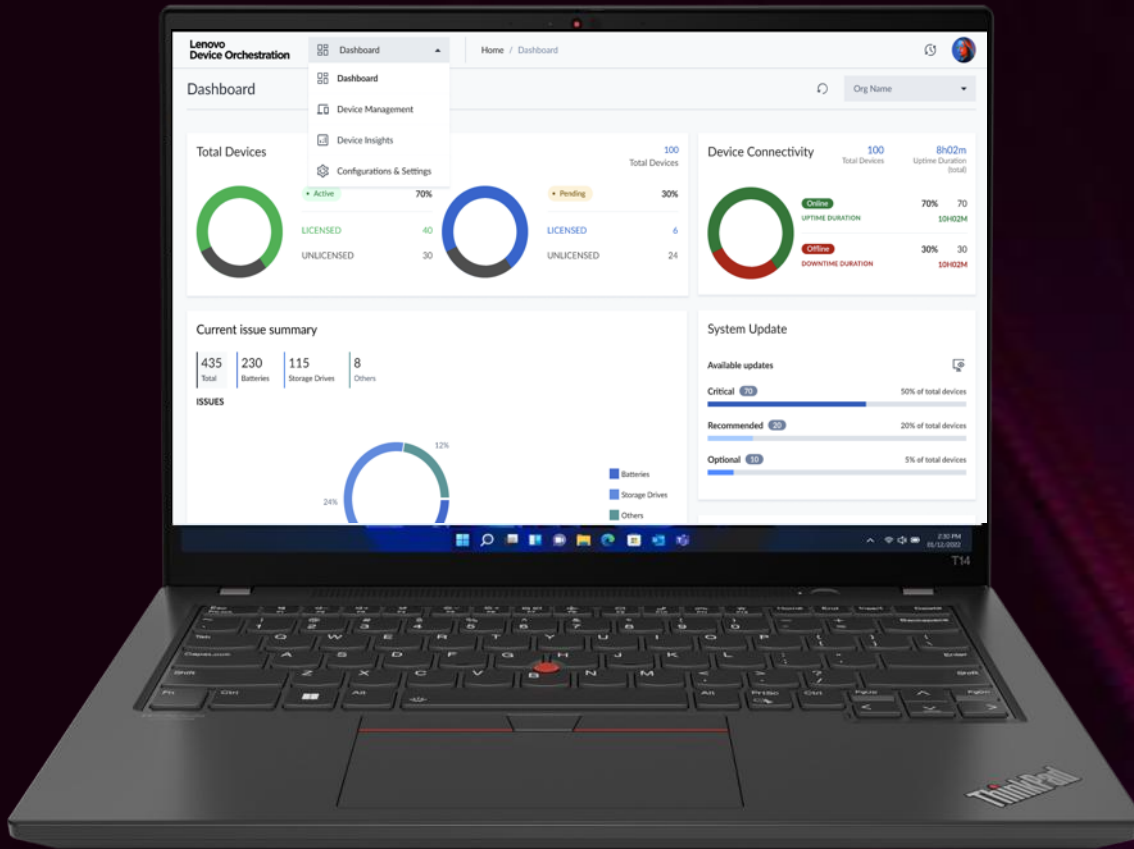
LDO is an intelligent endpoint management solution that empowers IT teams

Lenovo Device Orchestration (LDO)



Lenovo Device Orchestration with IT Assist

Optimize your device fleet's health, security, and performance with our premier endpoint management solution



Centralized Endpoint Management:

- Centralized dashboard
- Multi-layered security & data protection
- Multi-tenancy capabilities for MSPs



Device Management Module:

- Remote device management
- System updates
- Patch management (Windows and third-party software)



Device Insights Module:

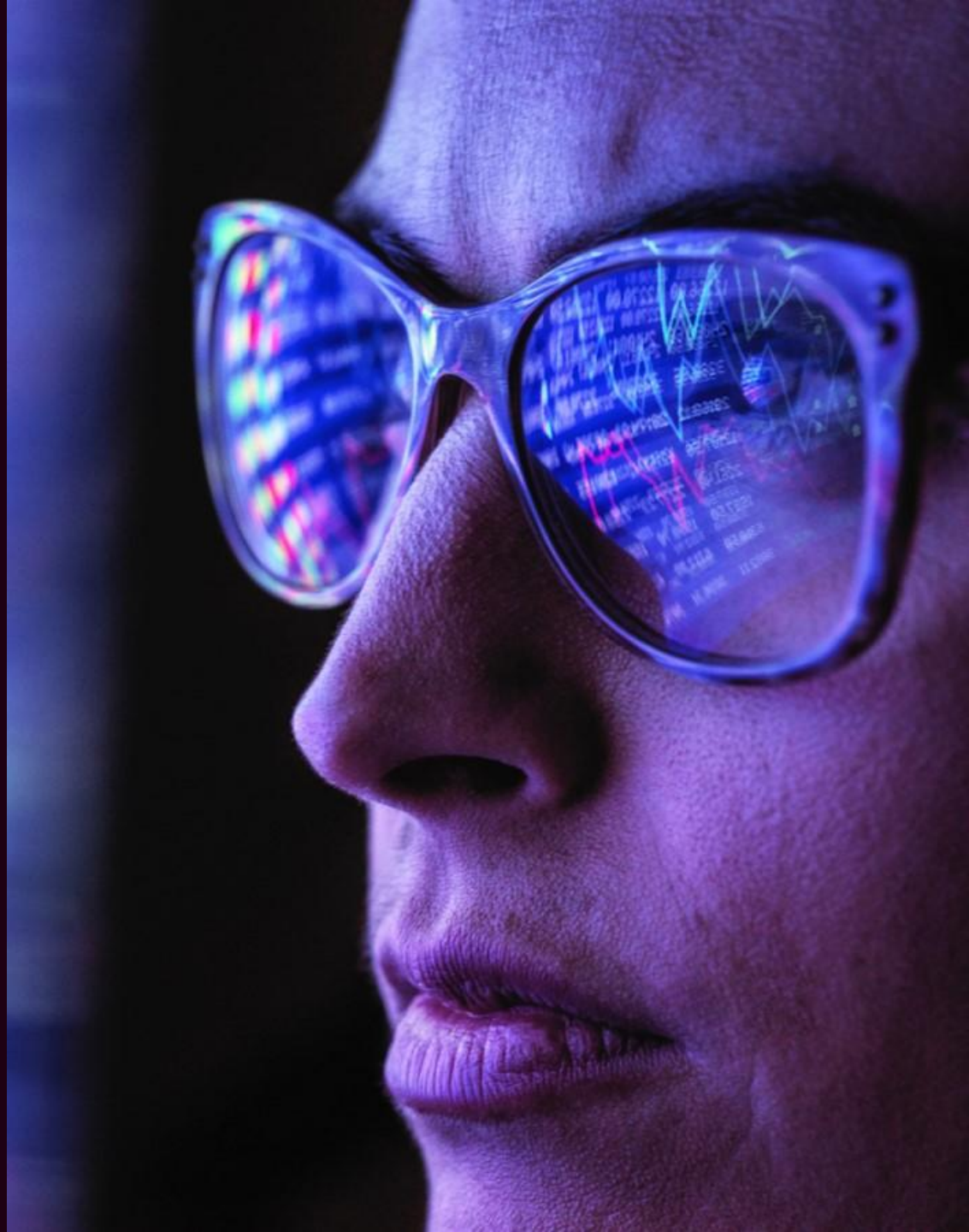
- Advanced predictive analytics
- Device and fleet-level health scoring
- Warranty info/component replacement



Lenovo IT Assist:

- AI-assisted Device Insights
- AI-assistant for personalized support & recommendations
- AI-powered visual forecasting based on historical trends

So, let's see
what you can
really do



Full Dashboard

See your all IT Fleet in one place



Dashboard

Total Devices

725
Total Devices

99%

• Active

• LICENSED

• UNLICENSED

686
33

Device Connectivity

725
Total Devices

16.67%
Total Uptime

Online 97.93% 710

Offline 2.07% 15

Current Issue Summary ⓘ

25 days ago

10556
BSOD ⓘ

20970
High CPU Apps ⓘ

7394
Storage ⓘ

4250
Batteries ⓘ

Issues

Category	Count
BSOD	10556
High CPU Apps	20970
Storage	7394
Batteries	4250

System Update

Available Updates ⓘ

Critical 12

Recommended 98

Optional 0

1.26% of total devices

2.10% of total devices

0% of total devices

Overall Health Score ⓘ

85%
Health ➤

Full Remote Device Management

Help your Team members to be the most
productive and secure



- Reports
- Device Management
 - Devices
 - Device Groups
 - System Inventory Management
 - Hardware Asset Management
 - Power Management
 - Accessories Inventory
 - Warranty Information
- App Management

Devices

Assign licenses Refresh

Delete Label Group Export Collect Logs

All Devices pf58jpma

<input type="checkbox"/>	Device Name	Processor	Status	Serial Number	Device Family	Manufacturer	Machine Type	Network	Uptime Duration
<input type="checkbox"/>	Baltics X9 Test	x64	Active	PF58JPMA	ThinkPad X9-1...	LENOVO	21Q6	Online	35 m

Application Management

Update Apps and Patch Windows Device Software



⋮

Reports

Device Management

App Management

Apps

Patch

System Update

Version: 25.7.0.2025-07-09T12:53



© 2019 - 2025 Lenovo. All rights reserved.

Apps

Deploy Delete All

Deployment History

Search

	App...	Name	Extension	Package Type	Version	Status	Modified Date	Platform
<input type="checkbox"/>		ChromeStandaloneS...	.exe	App	138.0.7194.0	Clean	06-30-2025 01:37 PM	Windows
<input type="checkbox"/>		npp.8.5.3.Installer.x64	.exe	App	8.5.3	Clean	06-20-2025 03:15 PM	Windows

Run System / BIOS updates for Lenovo Devices

Apply most crucial updates to your company
devices to stay secure and productive



Lenovo
Device Orchestration

Device Management

Home / App Management / System Update

Reports

Device Management

App Management

Apps

Patch

System Update

Version: 25.7.0.2025-07-09T12:53

© 2019 - 2025 Lenovo. All rights reserved.

System Update

Securely scan and update BIOS, Drivers and Firmware on Lenovo Windows devices

Schedule available updates

Check for updates

Last Updated on: 08-10-2025 01:00 PM

Updates

Updates by Devices

Updates by Groups

Scheduled Updates

Test History

All

Not Tested

Testing

Allowed to Deploy

Blocked

Severity

All

Update Type

All

Reboot Status

All

Search by update

AMD IO Driver - 11 (21H2 or Later)

Not Tested

Recommended

Driver

Reboot Required

BIOS Update Utility - 10/11

Not Tested

Critical

BIOS

Reboot Required

BIOS Update Utility - 10/11

Not Tested

Recommended

BIOS

Reboot Required

BIOS Update Utility - 10/11

Not Tested

Recommended

BIOS

Reboot Required

BIOS Update Utility - 10/11

Not Tested

Recommended

BIOS

Reboot Required

BIOS Update Utility - 10/11

Not Tested

Recommended

BIOS

Reboot Required

BIOS Update Utility - 10/11

Not Tested

Critical

BIOS

Reboot Required

BIOS Update Utility - 10/11

Not Tested

Recommended

BIOS

Reboot Required

Rows per page: 25

1-25 of 83

See more about your devices: Device Insights

AI monitors how devices work and predicts
issues before it occurs



- Configuration

Q

Y

•

Rows per page: 25

1-25 of 10556

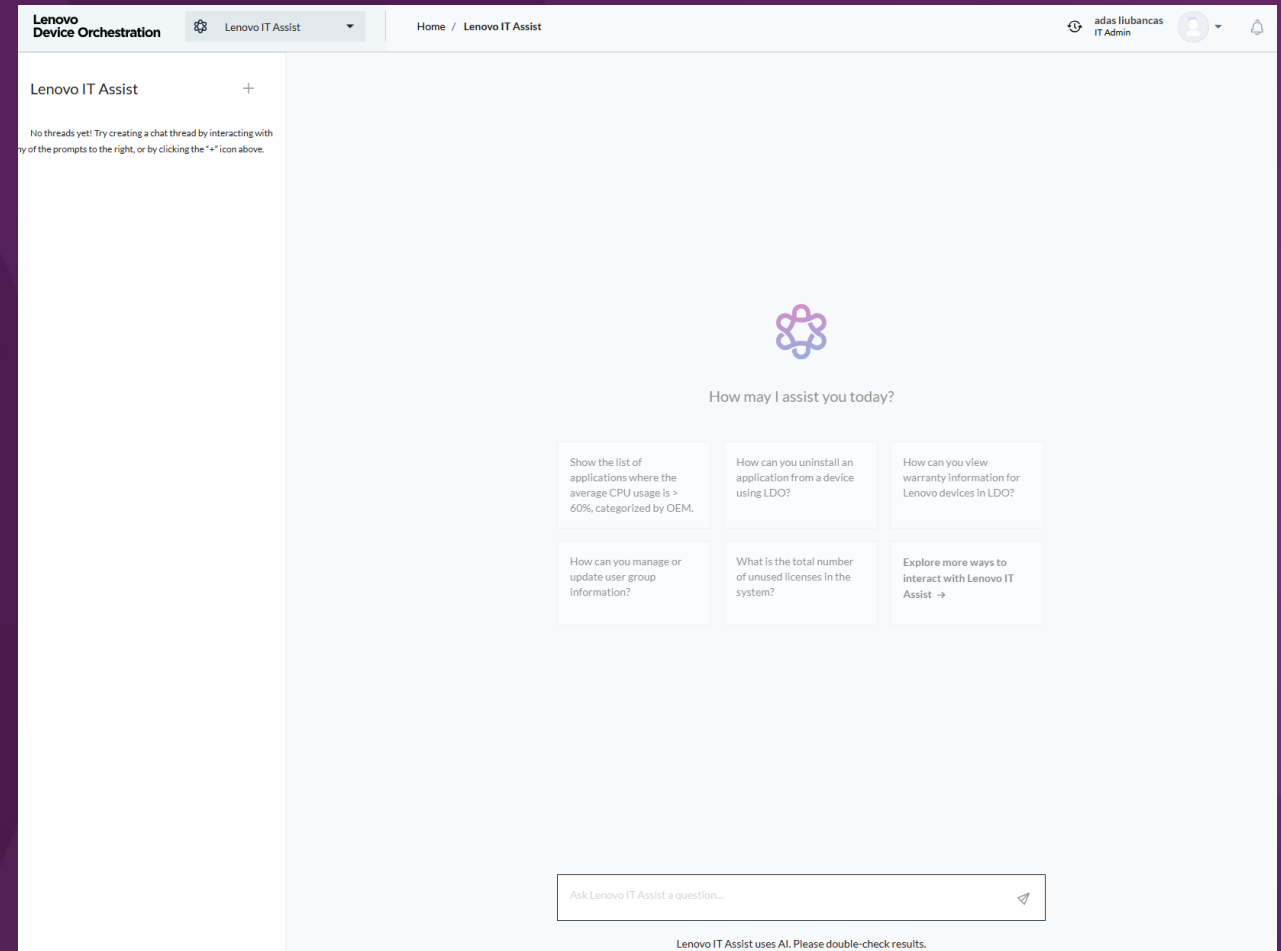
1

of 423 pages

◀

Lenovo IT Assist is an **add-on** that uses **Lenovo's** **cloud-based AI** **assistant** tailored to your device data

Lenovo IT Assist



LenovoPortal

← → ↻ https://portal-platform.euwe1.uds.lenovo.com/uds001-ldoeudemo4714/portal/orchestration-suite/it-assist/threads ☆ 📄 🟢 ⋮

Facebook Gmail Lenovo Google® vertėjas GeoGuessr - Let's e... Invest Gemini ChatGPT WhatsApp

Lenovo Device Orchestration

Lenovo IT Assist

Home / Lenovo IT Assist

adas liubancas
IT Admin


Lenovo IT Assist

STANDA... +

Recent Threads

New thread on 09/09 9:58 AM

New thread on 09/03 10:37 PM



How may I assist you today?

Share a list of BSOD errors across devices using different windows versions

What steps are involved in the Organization Setup?

How many devices are over 90% full?

How many application deployments scheduled?

How many PC are in my fleet?

Explore more ways to interact with Lenovo IT Assist →

Ask Lenovo IT Assist a question...

📤

Lenovo IT Assist uses AI. Please double-check results.

Product Tiers

Features	LDO	LDO Premium	LDO Dex
Active directory \ Single – sign on	✓	✓	✓
DEX Automated Remediations			✓
DEX API calls and MSP Support			✓
DEX Customized Dashboards			✓
3rd party Patching (Ivanti)		✓	✓
Power Management	✓	✓	✓
System Update(BIOS/FW/Drivers)	✓	✓	✓
IT Assist (AI-powered workflow automation)*	Add-On	Add-On	Add-On
Remote Desktop	✓	✓	✓
Virtual Power Control (Restart\Reboot)	✓	✓	✓
3 rd Party Integrations	✓	✓	✓
Automated Support ticketing	✓	✓	✓
Proactive and Predictive Recommendations	✓	✓	✓
Remote Syslog	✓	✓	✓
Proactive and Predictive mail Notifications	✓	✓	✓
Health Monitoring Dashboard	✓	✓	✓
Equipment inventory and Status: CPU, memory, SSD, serial number, HDD, NvMe, NICs GPUs\NPU, Warranty	✓	✓	✓

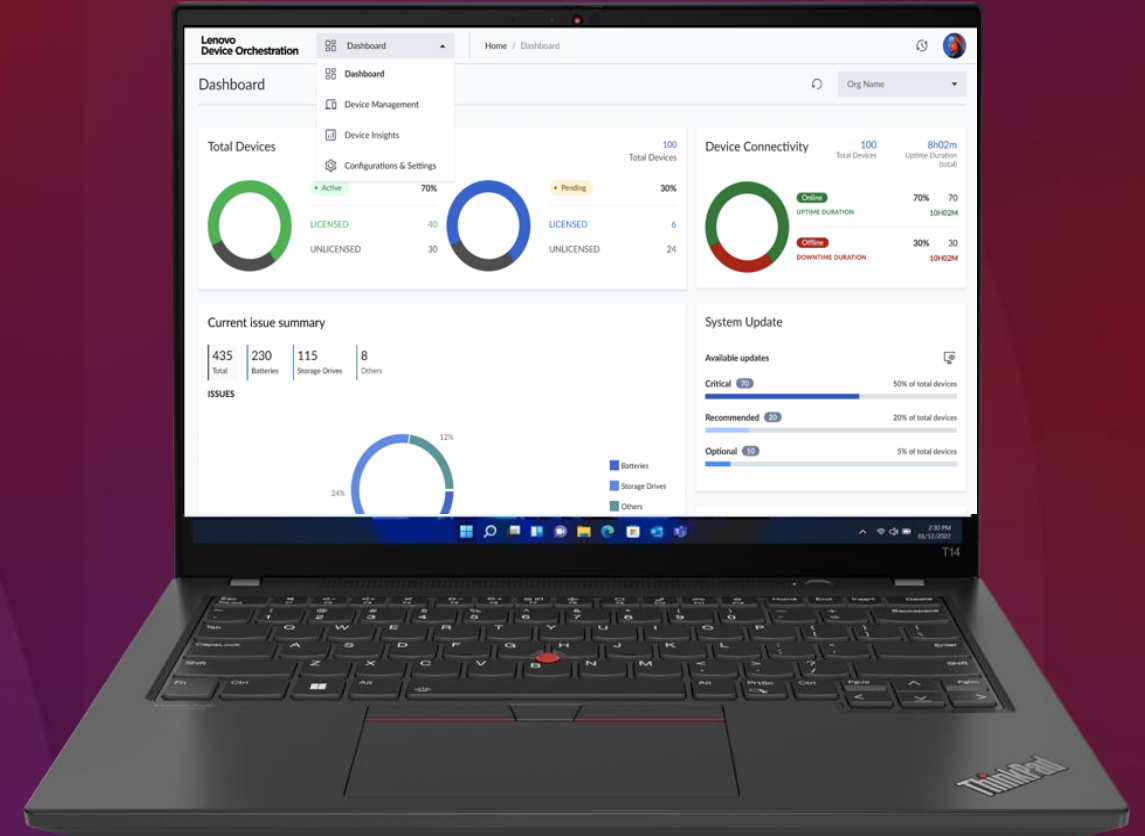


Lenovo Device Orchestration (LDO)

How to try

**30days Free Trial
(with up to 100 devices)**

1. Reach your Lenovo sales manager
2. Organized Teams meeting and live demo
3. Customer's trial period for 30 days



Soooo Easy to Manage

Lenovo Device Fleet Manager



We present **new generation** of ThinkVision monitors **-40**

Most advanced in terms of **sustainability, manageability** and **features**

ThinkPad is always happier with a **ThinkVision** monitor

ThinkVision Generations



Generation -10



Generation -20



Generation -30



Generation -40

Lenovo
ThinkVision

**Device Fleet
Manager**

Remote control
Low PC reliance
Faster deployment

The background is a dark space filled with numerous small, glowing dots. These dots are arranged in several distinct, flowing patterns that resemble particle trails or data streams. The colors of these trails range from a deep blue on the left to a vibrant purple on the right, with some trails appearing as bright, continuous lines. The overall effect is one of dynamic movement and technological sophistication.

Today, we're introducing innovative solutions from Lenovo

Going with Lenovo in 2025 means

**You go
with latest
Technology**



**Which are
sustainable by
design**



**So secure and
easy to manage
remotely**

Smarter
technology
for all

Lenovo

thanks.